



# LITESPHERE DROP 2.0

**Litesphere Drop 2.0 String Light- How it works**

A simple 3 step order process for cord spacing, drop length with light engine and globe choice for endless design combinations, and power lead length to create a unique experience for personal or public space.

**CONNECTION**  
IP65 Outdoor 2 pin twist connector for solid, reliable performance.

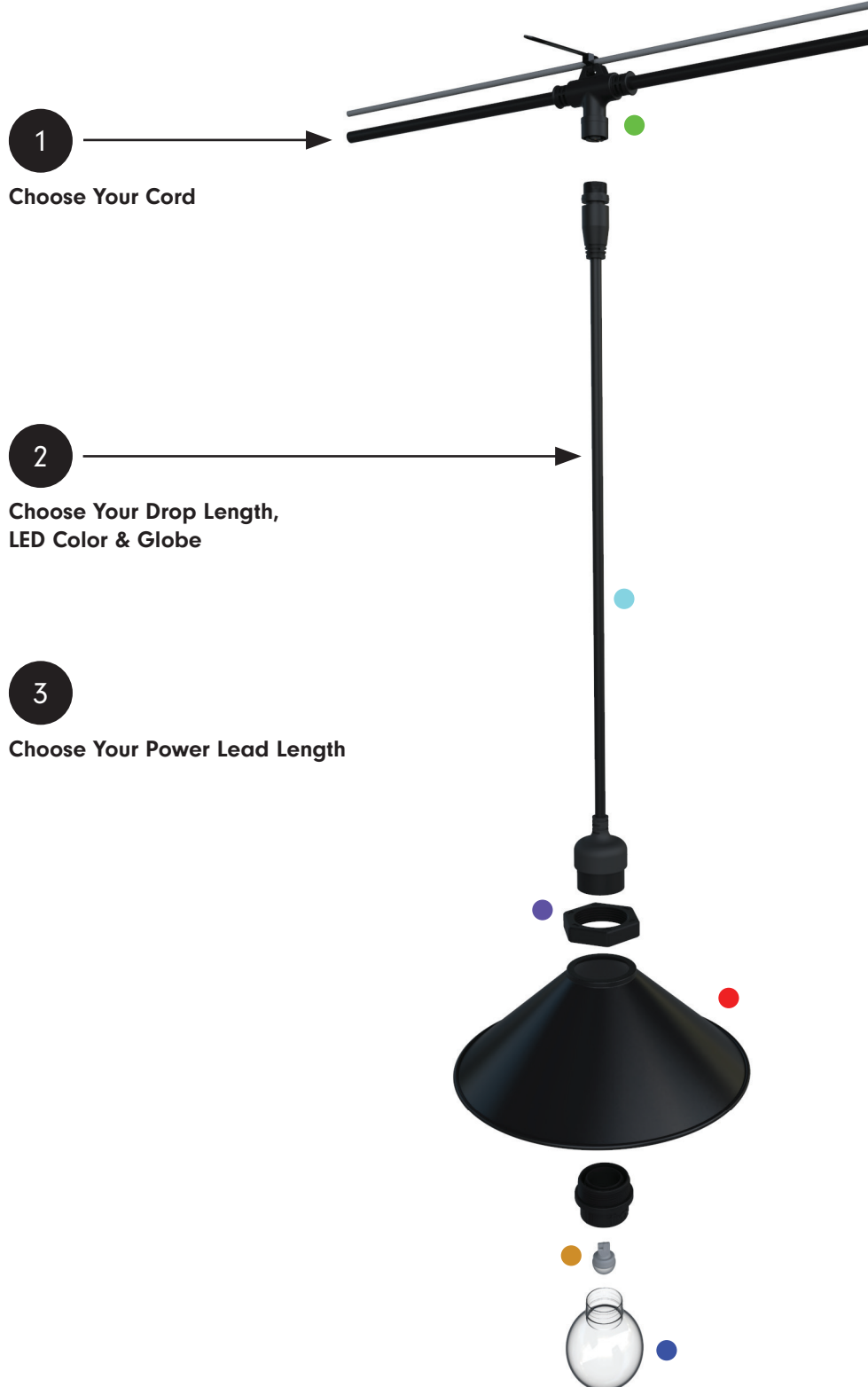
**DROP**  
Tivoli's New DROP system gives you standard 3 length options and a custom offering for additional lengths.

**SHADE ADAPTER - optional**  
Tivoli's Patent Pending universal shade adapter allows you to mix and match any shade with our line of String Light.

**LIGHT SHADE - optional**  
Multiple light shades to choose from to add form and function to your design.

**LIGHT ENGINE**  
Up to 90 lumens each and 3 light intensities to choose from. Available in Standard, High Output and Very High Output. Tivoli's VHO wedge based LED is 23 times brighter than our standard output offering. Built with Nichia SMD LEDs and a thermal plastic base for optimal heat dissipation

**GLOBES**  
3 globe options to finish your design and achieve a personal look.



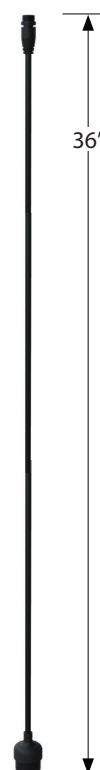
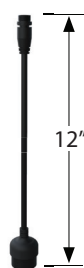


Project: \_\_\_\_\_ TYPE: \_\_\_\_\_

- The next evolution of ADAPT delivers a robust specification-grade strand with factory molded standard spacing for consistent quality from start to finish
- Litesphere ADAPT DROP 2.0 design provides optional suspended mounting or a twist-off cap for surface applications
- 12V DC Low voltage system for long runs
- Proprietary ADAPT screw base fitting
- Silicone-coated ADAPT glassware for assisting with shatter resistance
- IP65
- cULus
- 3 Year warranty



### Dimensions



## 1 - Strand Order Guide

PRODUCT CODE	PROFILE	STRAND COLOR	SAPCING
<b>LSD2</b>	<b>STRND</b>		
<b>LSD2</b> = Litesphere DROP 2.0	<b>STRND</b> = Strand	<b>BK</b> = Black <b>WH</b> = White*	<b>24</b> = 24" OC <b>36</b> = 36" OC <b>48</b> = 48" OC

\*Contact Factory for MOQ and lead time

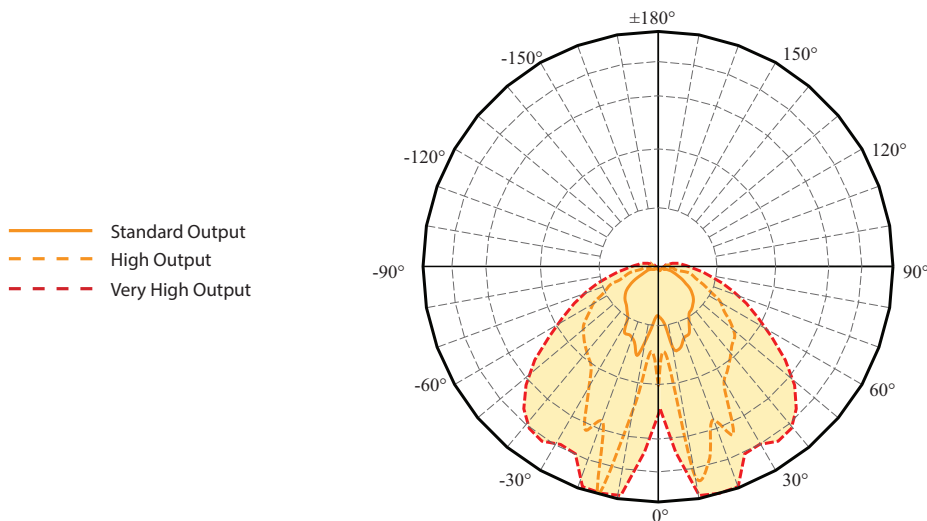
## 2 - Drop Order Guide

Note: All DROPS are pre-built with choice of LED chip and globe, ready to install.

PRODUCT CODE	PROFILE	DROP COLOR	LED TYPE	CCT COLOR	GLOBE	DROP LENGTH
<b>LSD2</b>	<b>DRP</b>					
<b>LSD2</b> = Litesphere Drop 2.0	<b>DRP</b> = Drop	<b>BK</b> = Black <b>WH</b> = White*	<b>S</b> = Standard Output <b>H</b> = High Output <b>V</b> = Very High Output	<b>19</b> = 1900K <b>27</b> = 2700K <b>30</b> = 3000K <b>35</b> = 3500K <b>40</b> = 4000K <b>50</b> = *5000K <b>AM</b> = *Amber <b>RD</b> = *Red <b>GN</b> = *Green <b>YL</b> = *Yellow <b>RB</b> = *Royal Blue	<b>C</b> = Clear <b>F</b> = Frosted <b>O</b> = Opal	<b>12</b> = 12" <b>24</b> = 24" <b>36</b> = 36"

\*Contact Factory for MOQ and lead time

## Photometrics



### 3 - Power Lead Order Guide

**LSL2-XEP-X-XX**

X = B (Black), W\* (White)

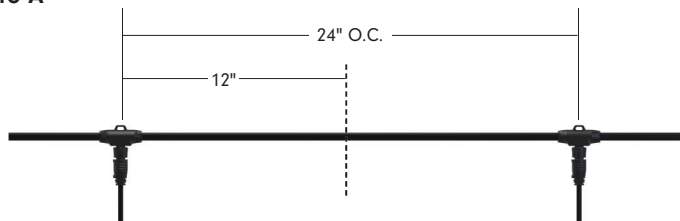
XX = 05 (5'), 10 (10'), 15 (15'), 20 (20'), 25 (25')

For custom length consult factory

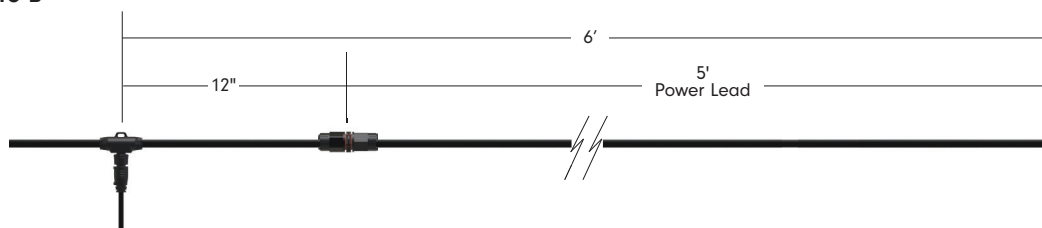
Figure A - All Litesphere ADAPT 2.0 are evenly cut between globes according to specified spacing.

Figure B - Power leads are added to the end cut, extending the total length of the power lead.

**Figure A**



**Figure B**



\*Contact Factory for MOQ and lead time

### Jumper Order Guide (Optional)

**LSL2-JUMPER-X-XX**

X = B (Black), W\* (White)

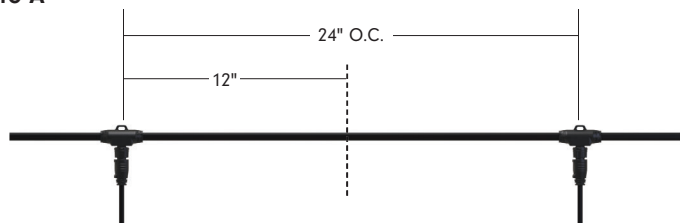
XX = 05 (5'), 10 (10')

For custom length, consult factory

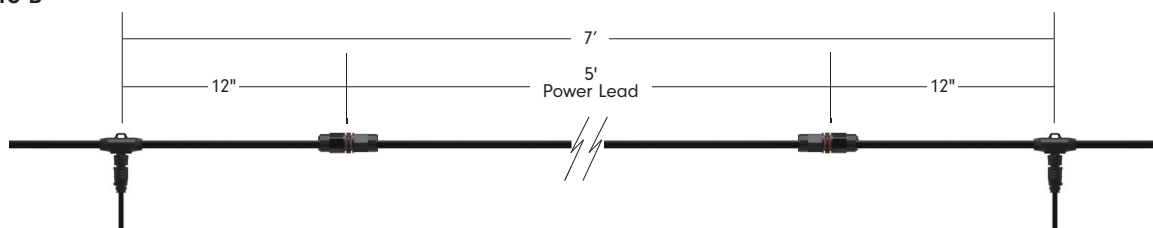
Figure A - All Litesphere ADAPT 2.0 are evenly cut between globes according to specified spacing.

Figure B - Jumpers are added between the cuts, extending the total length of wire between globes.

**Figure A**



**Figure B**



\*Contact Factory for MOQ and lead time

Tivoli, LLC. reserves the right to modify this specification without prior notice.



Specification

Strand On Center	24"	36"	48"
Weights/ft (Strand and Catenary Cable Only)	0.12	0.1142	0.11
Drop Length	12"	24"	36"
Weights/unit	0.15	0.19	0.22
Output - Standard Output	24"	36"	48"
Lumens/ft	3	2	1.5
Watt/ft	0.04	0.03	0.02
Maximum Run Length	200'	250'	300'
Output - High Output	24"	36"	48"
Lumens/ft	7	5	3.5
Watt/ft	0.12	0.077	0.06
Maximum Run Length	130'	150'	200'
Output - Very High Output	24"	36"	48"
Lumens/ft	45	30	22.5
Watt/ft	0.48	0.32	0.24
Maximum Run Length	50'	100'	120'
<b>Electrical</b>			
Input Voltage	12V DC		
Power Supply	Class 2		
<b>Control</b>			
Control System	0-10V, ELV, MLV, DMX 512 (Dim to 1% with an Infinity power supply and a 0-10V Lutron Diva dimmer)		
<b>Physical</b>			
Socket Housing	PVC		
American Wire Gauge	14 AWG		
Globe	PC globe		
Mounting	Surface Mount, Suspended		
Operating Temperature	-40°C to 65°C (-40°F to 149°F)		
<b>Certification and Testing</b>			
Certification	cULus Listed		
Lumen Maintenance (L70) Hours	60,000		
Environment	Wet Location		
IP Rating	IP65		
Warranty	3 years		

Mounting Example



Mounting Accessories



**LS-CABLE-XXX**

**XXX** = 60 (60'), 110 (110'), 500 (500')  
 Note: 1/8" Stainless Steel cable includes 2 cable locks for use with loads up to 200lbs



**LS-LOCKX**

**X** = 2 (2 locks), 4 (4 locks)  
 Cable lock for 1/8" cable  
 Note: Includes (1) cable release key. Lock holds loads up to 200lbs



**LS-TT**

Catenary Cable Tensioning Tool  
 Note: Up to 880lbs with minimal effort due to the 6:1 gear drive mechanism



**LS-UVZP-BK-XX**

**XX** = 50 (50PCS), 30 (30PCS)  
 UV resistant, heavy duty ties  
 Note: Maximum weight up to 100 lbs/tie

Light Shade Accessories



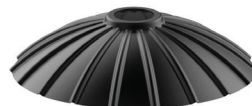
**SHADE-HT-BK-BK-XX**

**XX** = 10 (8.3"), 13 (12.6")  
 Light Shade - HAT  
 Weight: 0.38 lb (10), 1.03 lb (13)



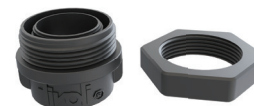
**SHADE-DS-BK-BK-10**

Light Shade - DISH  
 10.2" Black Top, Black Bottom  
 Weight: 0.72 lb



**SHADE-FL-BK-BK-XX**

**XX** = 10 (9.8"), 13 (13.8")  
 Light Shade - FLOWER  
 Black Top, Black Bottom  
 Weight: 0.54 lb (10), 1.1 lb (13)



**SHADE-ADP-LSL2-XX-XX**

**XX** = BK (Black), WH\* (White)  
**XX** = 01 (1pc), 25 (25 pc), 50 (50pc)  
 Litesphere 2.0 Shade Adapter kit

\*Consult factory for lead time and MOQ

Tivoli, LLC. reserves the right to modify this specification without prior notice.

**Replacement Parts**

\*Contact Factory for MOQ and lead time



**LSL-XX-S-12**  
**XX** = 19, 27, 30, 35, 40, 50,  
 AM, RD, RB, GR, YL  
 12V Standard Brightness  
 Wedge Base LED  
 Sold each



**LSL-XX-H-12**  
**XX** = 19, 27, 30, 35, 40, 50,  
 AM, RD, RB, GR, YL  
 12V High Output  
 Wedge Base LED  
 Sold each



**LSL-XX-V-12**  
**XX** = 19, 27, 30, 35, 40, 50,  
 AM, RD, RB, GR, YL  
 12V Very High Output  
 Wedge Base LED  
 Sold each



**LSL2-EC-X**  
**X** = **B** (BLACK), **W** (WHITE)  
 Litesphere 2.0 End-Cap  
 Sold each  
**LSL2-EC-X-PK20**  
 Litesphere 2.0 End-Cap  
 20pack

**Replacement Globes**


**LST-CG**  
 Litesphere 2.0  
 Clear globe  
 sold each



**LST-OP**  
 Litesphere 2.0  
 Opal globe  
 sold each



**LST-FG**  
 Litesphere 2.0  
 Frosted globe  
 sold each

**Controls**


**TVOQ-1-WH**  
 White  
 16 DMX channel, 16 scene,  
 4 zone, glass touch screen



**TVOQ-10-XX-7**  
**XX** = BK (Black), WH (White)  
 1024 DMX channel, 500 scene,  
 10 zone, glass touch screen



**TVOQ-2-BK**  
 Black  
 512 DMX channel, 99 scene,



Power Supplies

**INFINITY - MLV / ELV / 0-10V / PWM / TRIAC**

Dim to 1% with a 0-10V Lutron Diva dimmer (by others)

DESCRIPTION	CAT NO	APPLICATION	PRIMARY VOLTAGE	SECONDARY VOLTAGE	CIRCUIT BREAKERS	MAX LOAD	MIN LOAD	CIRCUIT CAPACITY
Infinity Series Class 2 Transformer	INF-J-30-1-2.5-12	Indoor / Outdoor	100 - 277V AC	12V DC	1	30W	3W	2.5A
	INF-J-60-1-5-12				1	60W	6W	5A
	INF-J-180-3-5-12				3	3x60W	3x6W	3x5A
	INF-J-300-5-5-12				5	5x60W	5x6W	5x5A

**ADNM - NON DIMMING**

DESCRIPTION	CAT NO	APPLICATION	PRIMARY VOLTAGE	SECONDARY VOLTAGE	CIRCUIT BREAKERS	MAX LOAD	CIRCUIT CAPACITY
ADNM Series Class 2 Transformer	ADNM-60-1-5-12-D	Indoor / Outdoor	100-277V AC 50/60 HZ	12V DC	1	60W	5A
	ADNM-80-1-5-12-D				1	60W	5A
	ADNM-150-2-5-12-D				2	2x60W	2x5A
	ADNM-240-3-5-12-D				3	3x60W	3x5A
	ADNM-320-4-5-12-D				4	4x60W	4x5A

**ADNM - 0-10V DIMMING**

DESCRIPTION	CAT NO	APPLICATION	PRIMARY VOLTAGE	SECONDARY VOLTAGE	CIRCUIT BREAKERS	MAX LOAD	CIRCUIT CAPACITY
ADNM Series Class 2 Transformer	ADNM-60-1-5-12-DOT	Indoor / Outdoor	100-277V AC 50/60 HZ	12V DC	1	60W	5A
	ADNM-80-1-5-12-DOT				1	60W	5A
	ADNM-150-2-5-12-DOT				2	2x60W	2x5A
	ADNM-240-3-5-12-DOT				3	3x60W	3x5A
	ADNM-320-4-5-12-DOT				4	4x60W	4x5A

**ADNM - DMX SINGLE ADDRESS**

DESCRIPTION	CAT NO	APPLICATION	PRIMARY VOLTAGE	SECONDARY VOLTAGE	CIRCUIT BREAKERS	MAX LOAD	CIRCUIT CAPACITY
ADNM Series Class 2 Transformer	ADNM-60-1-5-12-DIN	Indoor / Outdoor	100-277V AC 50/60 HZ	12V DC	1	60W	5A
	ADNM-80-1-5-12-DIN				1	60W	5A
	ADNM-150-2-5-12-DIN				2	2x60W	2x5A
	ADNM-240-3-5-12-DIN				3	3x60W	3x5A
	ADNM-320-4-5-12-DIN				4	4x60W	4x5A

**ADNM - DMX MULTI ADDRESS**

DESCRIPTION	CAT NO	APPLICATION	PRIMARY VOLTAGE	SECONDARY VOLTAGE	CIRCUIT BREAKERS	MAX LOAD	CIRCUIT CAPACITY
ADNM Series Class 2 Transformer	ADNM-150-2-5-12-DIN-2	Indoor / Damp	100-277V AC 50/60 Hz	12V DC	2	2x60W	5A
	ADNM-240-3-5-12-din-3				3	3x60W	3x5A